

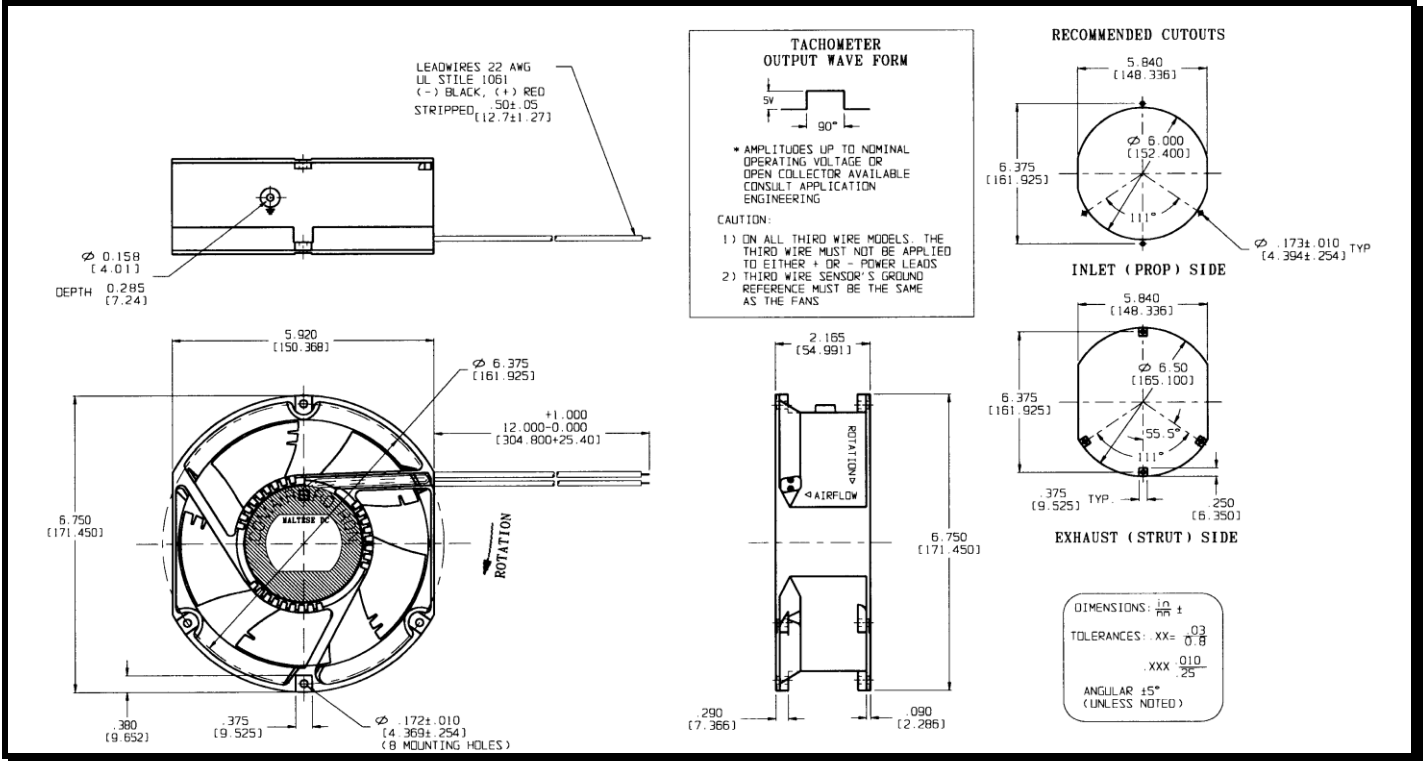
# SPECIFICATIONS

**Model Number:** MTD48Z3  
**Part Number:** 17000020A

**Version:** 03  
**Mar 25, 2022**



## Mechanical Drawing:



### Motor:

Nominal Voltage = 48 vdc  
 Operating Voltage Range = 30 - 60 vdc  
 Nominal Running Current = 1.10 amps  
 Max. Locked Rotor Current = 2.0 amps  
 Running Power = 52.8watts  
 Average Speed = 4200 RPM  
 Bearings = Ball  
 Air Flow = 363 CFM  
 Acoustic = 61.7 dBA

### Construction:

Venturi: Single Piece Die-cast Aluminum, Black.  
 Propeller: Plastic, Black, UL 94V-0

### Life Expectancy:

This fan is designed for continuous duty life of 76,000 hours at 40°C.

### Additional Features:

Brushless DC Motor  
 Locked Rotor Protection  
 Reverse Polarity Protected  
 Automatic Restart Capability  
 Operating Temperature: -10°C to 70°C  
 Storage Temperature: -40°C to 85°C

### Termination:

12" Lead wires, AWG 22, UL 1061  
 Red - Power (+)  
 Black - Ground (-)

### Agency Approved:

UL, CUL, CE

PQ Curve:

